

LGP-A(B-2B) Petrol engine pump



LGP20-2B
LGP30-2B



LGP20-B
LGP30-B



Application

- Transfer of clean water at a temperature between 0 and 40 ° C
- Usable for water supply and drainage for factories, mines, public facilities as well as for irrigation

Pompe

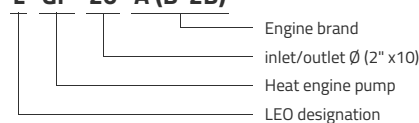
- Reinforced pump body for greater durability and reliability
- Better sealing thanks to a specific mechanical seal
- Outlet with 5 possible directions for easier use
- Improved starter grip for easier starting
- Impeller and diffuser in cathaphoresis-treated cast iron
- Maximum suction at 5 m, priming time at 5 m of 2 min
- 38 mm suction and blowing

Moteur

- LEO engine as standard, Honda or Briggs and Stratton engine as option
- Single cylinder, 4-stroke, air-cooled
- Maximum power 5,5 or 6,5 Hp
- Engine cylinder capacity: 163 cm³ or 196 cm³
- Rotation speed: 3600 rpm

Identification codes

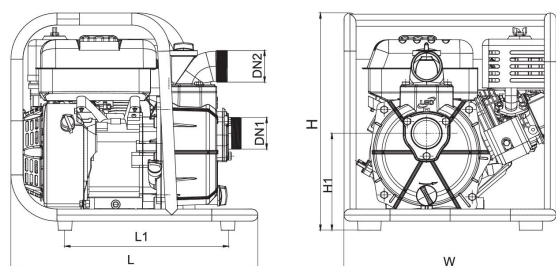
L GP 20 A (B-2B)



Technical data

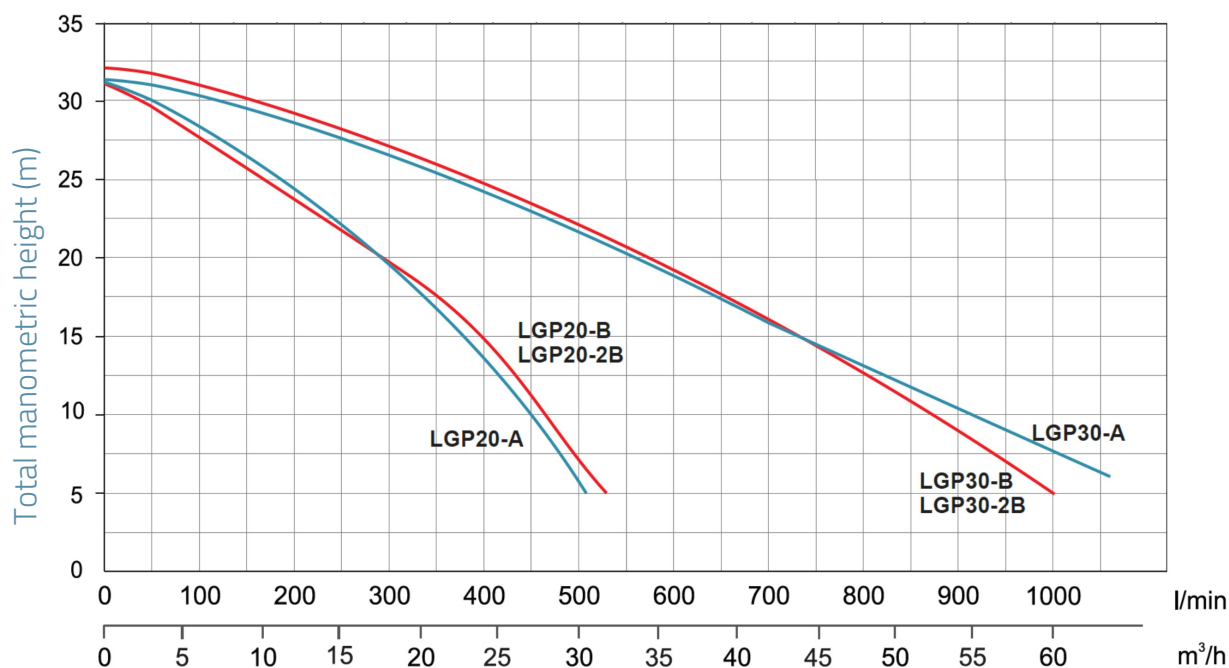
| MODEL | kW | Q (m ³ /h) | 0 | 5 | 10 | 15 | 20 | 25 | 30 | 35 | 40 | 45 | 50 | 55 | 60 |
|-----------|------|-----------------------|----|------|------|------|------|------|------|------|------|------|-----|-----|------|
| | | Q (l/min) | 0 | 83 | 167 | 250 | 333 | 417 | 500 | 583 | 667 | 750 | 833 | 917 | 1000 |
| LGP10-A | 2.2 | | | | | | | | | | | | | | |
| LGP15 A | 2.25 | | 26 | 23.9 | 20 | 16.5 | | | | | | | | | |
| LGP20-A | 4.1 | | 32 | 29.1 | 25.2 | 21.5 | 16.6 | 11.3 | 6.5 | | | | | | |
| LGP20-A-1 | 3.7 | | | | | | | | | | | | | | |
| LGP30-A-1 | 4.9 | | | | | | | | | | | | | | |
| LGP20-B | 3.75 | | 32 | 28 | 24.5 | 21 | 17.5 | 14 | 7.5 | | | | | | |
| LGP20-2B | 3.75 | | 32 | 28.5 | 25 | 22 | 18 | 14 | 7.5 | | | | | | |
| LGP30-A | 4.85 | | 32 | 30.4 | 29.3 | 27.1 | 25.5 | 23 | 20.5 | 18 | 16.2 | 13.5 | 11 | 9 | 6 |
| LGP30-B | 3.75 | | 31 | 30 | 28 | 26.5 | 25 | 23 | 20 | 17.5 | 15 | 13.5 | 10 | 6.5 | 4 |
| LGP30-2B | 3.75 | | 33 | 32 | 30 | 28.4 | 27 | 25 | 22 | 19.3 | 17 | 15.5 | 12 | 8.6 | 5 |

Dimensions



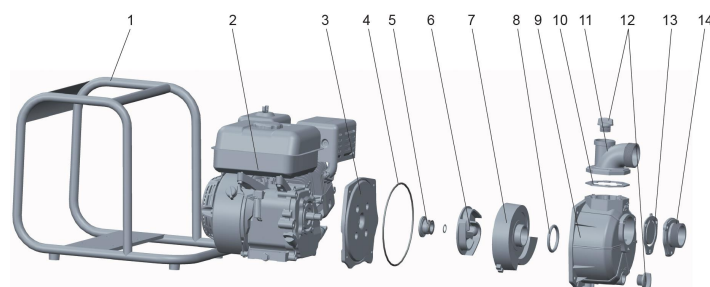
| MODEL | DN1 | DN2 | L | W | H | H1 |
|-----------|-----|-----|-----|-------|-------|-------|
| LGP10-A | | | | | | |
| LGP15 A | 1½ | 1½ | 438 | 358 | 377 | 164.2 |
| LGP20-A | 2 | 2 | 455 | 397.5 | 405.5 | 181 |
| LGP20-A-1 | | | | | | |
| LGP30-A-1 | | | | | | |
| LGP20-B | 2 | 2 | 530 | 420 | 425 | 181 |
| LGP20-2B | 2 | 2 | 530 | 420 | 425 | 183 |
| LGP30-A | 3 | 3 | 455 | 397.5 | 405.5 | 181 |
| LGP30-B | 3 | 3 | 530 | 420 | 425 | 190.5 |
| LGP30-2B | 3 | 3 | 530 | 420 | 425 | 190 |

Hydraulic performance



Exploded view

| No. | Type | Materials |
|-----|------------------|----------------------|
| 1 | Frame | steel |
| 2 | Engine | |
| 3 | Pump bottom | aluminum alloy ADC12 |
| 4 | O-ring | nitrile rubber (NBR) |
| 5 | Mechanical seal | carbon / ceramic |
| 6 | Impeller | cast iron HT200 |
| 7 | Diffuser | cast iron HT200 |
| 8 | O-ring | nitrile rubber (NBR) |
| 9 | Pump body | aluminium |
| 10 | Seal | nitrile rubber (NBR) |
| 11 | Outlet fitting | aluminium |
| 12 | Plug | PA6 resin |
| 13 | Non-return valve | nitrile rubber (NBR) |
| 14 | Inlet fitting | aluminium |



Packaging

| MODEL | Weight (kg) | Length L (mm) | Width W (mm) | Height H (mm) |
|-----------|-------------|---------------|--------------|---------------|
| LGP10-A | 0 | 0 | 0 | 0 |
| LGP15 A | 15.5 | 464 | 378 | 400 |
| LGP20-A | 22.5 | 470 | 412 | 432 |
| LGP20-A-1 | 0 | 0 | 0 | 0 |
| LGP30-A-1 | 0 | 0 | 0 | 0 |
| LGP20-B | 24 | 545 | 435 | 435 |
| LGP20-2B | 25.2 | 545 | 435 | 435 |
| LGP30-A | 24 | 470 | 412 | 432 |
| LGP30-B | 25 | 545 | 435 | 435 |
| LGP30-2B | 27.2 | 545 | 435 | 435 |

