

## XSP/ID (> 1,2kW) Stainless steel Lift pump with cast iron body, digging wheel



### Application

- Lifting of waste water from factories, buildings, ...
- Lifting systems in treatment plants
- Methanisation plants

### Pompe

- Cast iron pump body
- Cable length: 6 m avec prise
- Maximum particle passage diameter XSP18-12/1.3ID: 22 mm
- Maximum particle passage diameter XSP26.4-10/1.8ID: 28.5 mm
- Maximum immersion depth: 5 m
- Maximum liquid temperature: +40 °C
- pH between 4 and 10
- Maximum density of the liquid:  $1.2 \times 10^3 \text{ kg/m}^3$

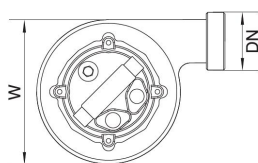
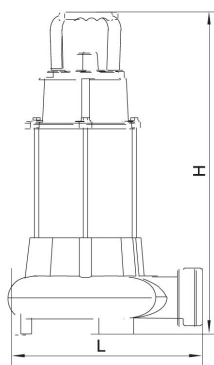
### Moteur

- Integrated thermal protection
- Stainless steel shaft
- Insulation class: B
- Protection class: IP68

### Identification codes

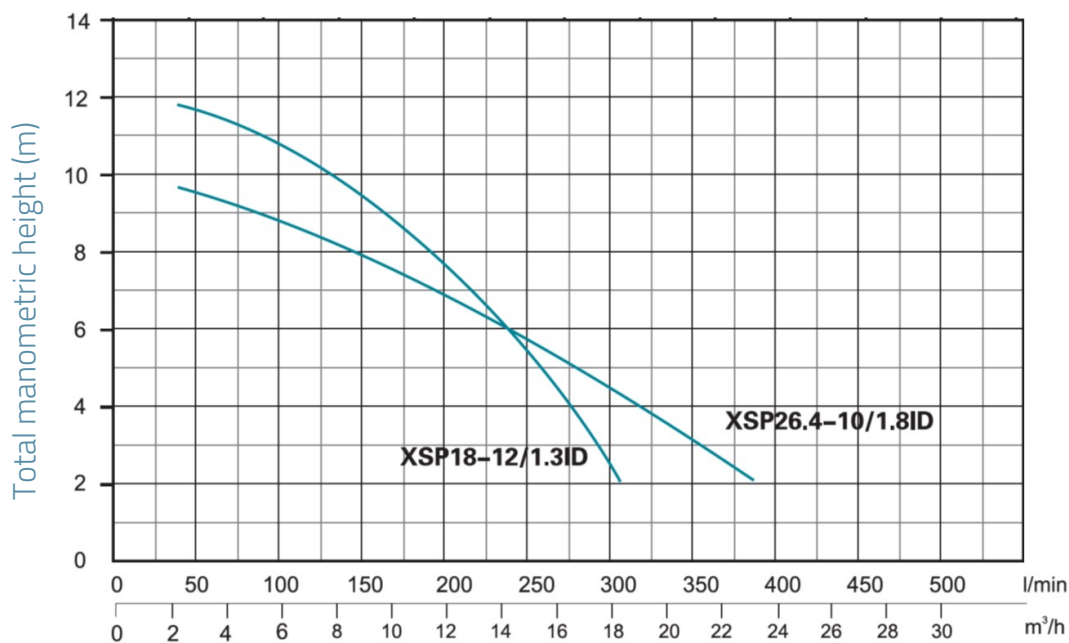
XSP	18	-12	/1.3	I	D	
						wastewater lifting pump
						Max flow (m <sup>3</sup> /h)
						maximum pressure (m)
						Power (kW)
						Cast iron pump body
						digging wheel

## Dimensions



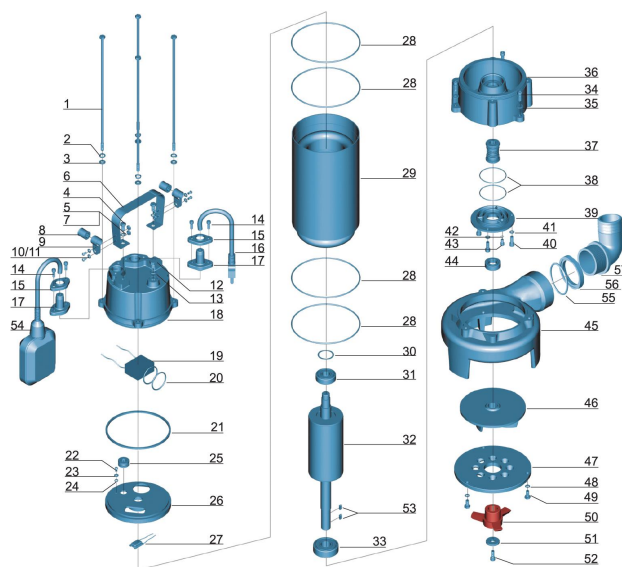
MODEL	DN	L	W	H
XSP18-12/1.3ID	2	252	191	510
XSP26.4-10/1.8ID	2.5	290	196	520

## Hydraulic performance



## Exploded view

No.	Type
1	Shaft
2	Washer
3	Washer
4	Washer
5	Washer
6	Washer
7	Ball
8	Ball
9	Cable protection
10	Cable holder
11	Washer
12	Screw
13	Ball
14	O-ring
15	Screw
16	Flange
17	Power cable
18	Cable gland
19	Electric box cover
20	Capacitor
21	O-ring
22	Screw
23	Screw
24	O-ring
25	Washer
26	Washer ring
27	Blow cover
28	Thermal protection
29	O-ring
30	Stator
31	Stator
32	Stator
33	Bearing
34	Bearing
35	Screw
36	Washer
37	O-ring
38	O-ring
39	O-ring
40	O-ring
41	O-ring
42	O-ring
43	O-ring
44	O-ring
45	Washer
46	O-ring
47	O-ring
48	O-ring
49	O-ring
50	O-ring
51	O-ring
52	O-ring
53	O-ring
54	O-ring
55	O-ring
56	O-ring
57	O-ring



## Packaging

MODEL	Weight (kg)	Length L (mm)	Width W (mm)	Height H (mm)
<b>XSP18-12/1.3ID</b>	22.8	570	310	245
<b>XSP26.4-10/1.8ID</b>	30	585	350	245